

**Printronix Auto ID Guide Specification  
RFID Label  
860-960 MHz EPC Class 1, Gen 2  
Alien 9710 Squig Antenna**



**Applicable Printer Models**

**SL4M MP2 and SL4M Short Pitch**

**Disclaimer**

Notwithstanding anything to the contrary in this document, the guidelines, suggestions and other information included in this document or otherwise provided to the recipient, including the guidelines and suggestions for developing converted RFID labels, are provided by Printronix Auto ID on an "as is" basis and without warranty of any kind whatsoever, expressed or implied. In particular, Printronix Auto ID disclaims any implied warranty of merchantability or fitness for a particular purpose. Printronix Auto ID will not be liable under any circumstances for any damages or losses related in any way to use of the guidelines, specifications or other information, including damages, which may be incurred as a result of labels not working properly in a specific application. All specifications are subject to change without notice. Testing of the converted labels in the printer is recommended prior to production quantities.

6/14/2016

## Scope

This document provides guide specifications for constructing UHF Class 1, Gen 2, RFID labels with an Alien 9710 Squig RFID Gen2 Antenna for use with Printronix Auto ID RFID SL4M and SL4M Short Pitch printers Only.

## Requirements

Inlay Characteristics

Inlay: **Alien 9710 Squig**. Silicon Type: **Alien Higgs 4**. TID: **E2003414**.

Nominal operating frequency: **860-960 MHz**.

EPC Memory: **128 bits**.

User Memory: **128 bits**.

EPC Protocol: **UHF Class 1, Gen 2**

Printer Setup

SL4M MP2 & SL4M Short Pitch Coupler Position: **Yellow**

SL4M MP2 & SL4M Short Pitch RFID menu Tag Type: “**Alien9710 Squig**”

SL4M **MP2 Std Pitch** RFID menu (Interim Tag Type: “**Alien9720 HiScn**”).

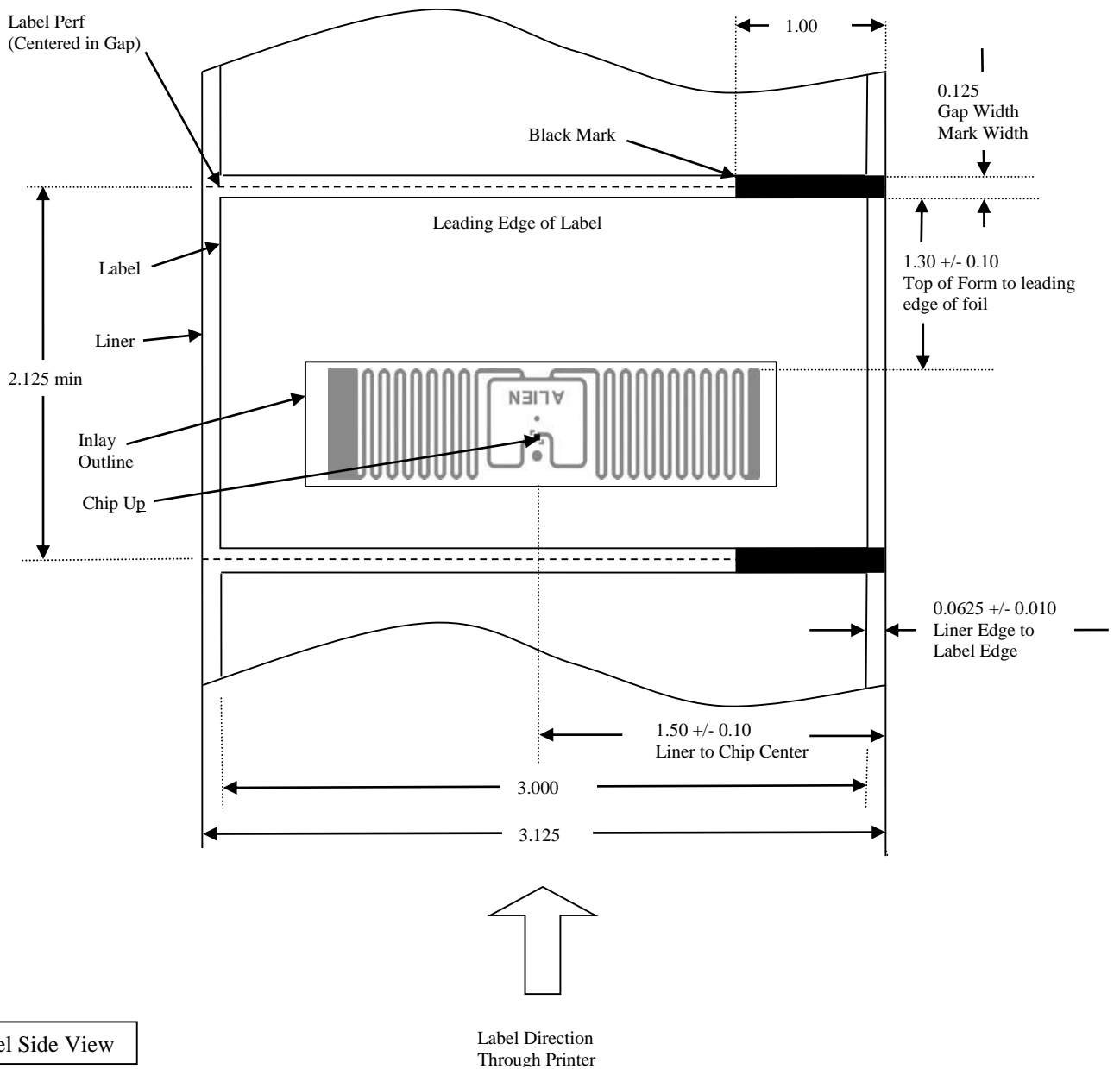
SL4M **Short Pitch** RFID menu (Interim Tag Type: “**Avery AD232**”).

SL4M **Short Pitch** RFID menu Tag Position: - **0.3 inches**

Interim Tag Type selection works with 96 bit EPC only. Printer firmware update is required to work with full memory.

## Contact Information

For comments or questions, please contact Andy Edwards at [AEdwards@Printronixautoid.com](mailto:AEdwards@Printronixautoid.com) or 657-258-0816.



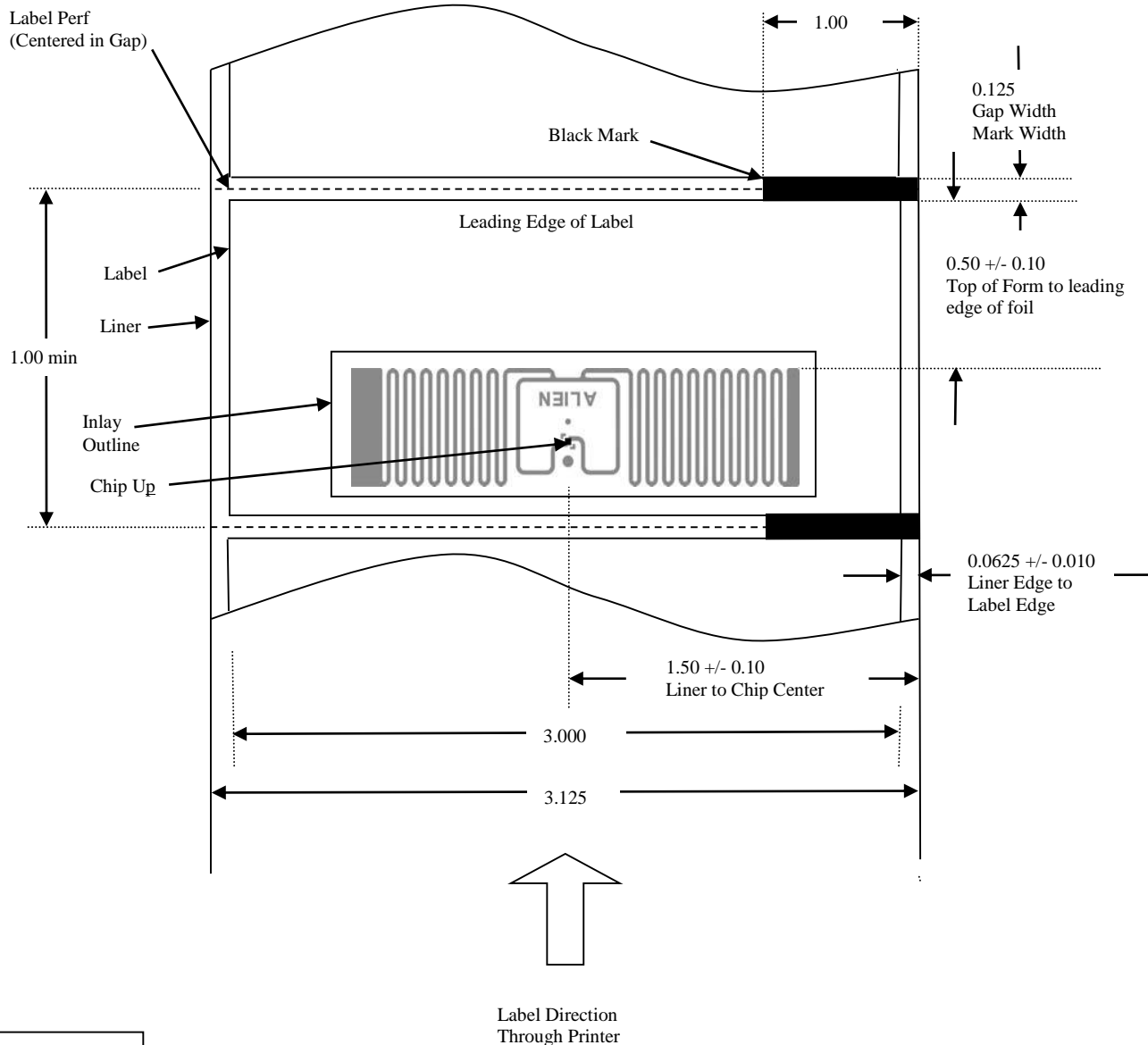
Label Side View

**Printronix Auto ID RFID Label Requirements for SL4M MP2 Only Gen 2 Alien 9710 Squig Inlay**

Not to Scale  
All Dimensions in Inches

June 14, 2016  
Revision 1.0

**Figure 1. Label Layout**



Label Side View

**Printronix Auto ID RFID Label Requirements for SL4M “Short Pitch” Alien 9710 Squig Inlay**

Not to Scale  
All Dimensions in Inches

June 14, 2016  
Revision 1.0

**Figure 2. Label Layout**