

**Printronix Auto ID Guide Specification  
RFID Label  
860-960 MHz EPC Class 1, Gen 2  
Avery AD-380iL Antenna**



**Applicable Printer Models**

**SL4M MP2 and SL5000r MP2**

**Disclaimer**

Notwithstanding anything to the contrary in this document, the guidelines, suggestions and other information included in this document or otherwise provided to the recipient, including the guidelines and suggestions for developing converted RFID labels, are provided by Printronix Auto ID on an "as is" basis and without warranty of any kind whatsoever, expressed or implied. In particular, Printronix Auto ID disclaims any implied warranty of merchantability or fitness for a particular purpose. Printronix Auto ID will not be liable under any circumstances for any damages or losses related in any way to use of the guidelines, specifications or other information, including damages, which may be incurred as a result of labels not working properly in a specific application. All specifications are subject to change without notice. Testing of the converted labels in the printer is recommended prior to production quantities.

6/15/2016

## Scope

This document provides guide specifications for constructing UHF Class 1, Gen 2, RFID labels with a Avery AD-380iL RFID Gen2 Antenna for use with Printronix Auto ID MP2 series RFID printers.

## Requirements

### Inlay Characteristics

Inlay: Avery AD-380iL

Silicon Type: NXP G2iL

TID: NXP G2iL TID = E2006805 or E2006806

Nominal operating frequency: 860-960 MHz.

EPC Memory: 128 bits

User Memory: N/A

EPC Protocol: UHF Class 1, Gen 2

### Printer Setup

SL4M and SL5000r Coupler Position: **Yellow**

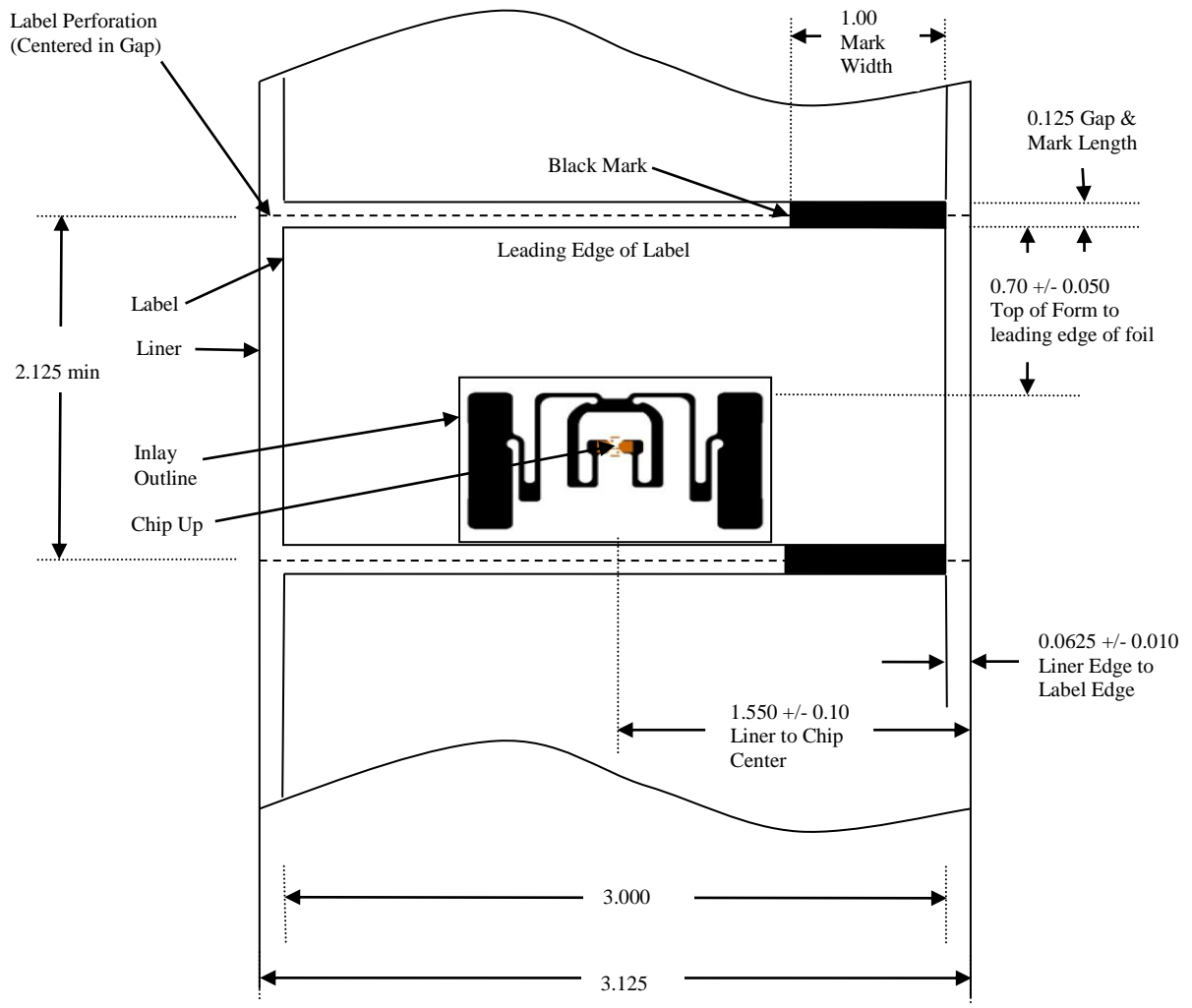
SL4M and SL5000r RFID menu Tag Type: “**Avery AD380iL**”

SL4M and SL5000r RFID menu (Interim Tag Type: “**Avery AD230**”).

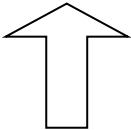
Interim Tag Type selection works with 96 bit EPC only. Printer firmware update is required to work with full memory.

## Contact Information

For comments or questions, please contact Andy Edwards at [AEdwards@Printronixautoid.com](mailto:AEdwards@Printronixautoid.com) or 657-258-0816.



Label Side View



Label Direction  
Through Printer

**Printronix Auto ID RFID Label Requirements for MP2 Gen 2  
Avery AD-380iL Inlay**

Not to Scale  
All Dimensions in Inches

**Figure 1 Label Layout**

June 15, 2016



<b>RFID Label Guide Specification Gen 2, Avery AD-380iL</b>	
<b>184649-000 Rev B</b>	<b>Page 3 of 3</b>